

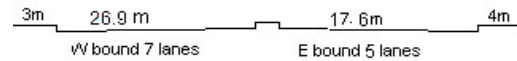
YEAR 2023

CORE STATION 1002

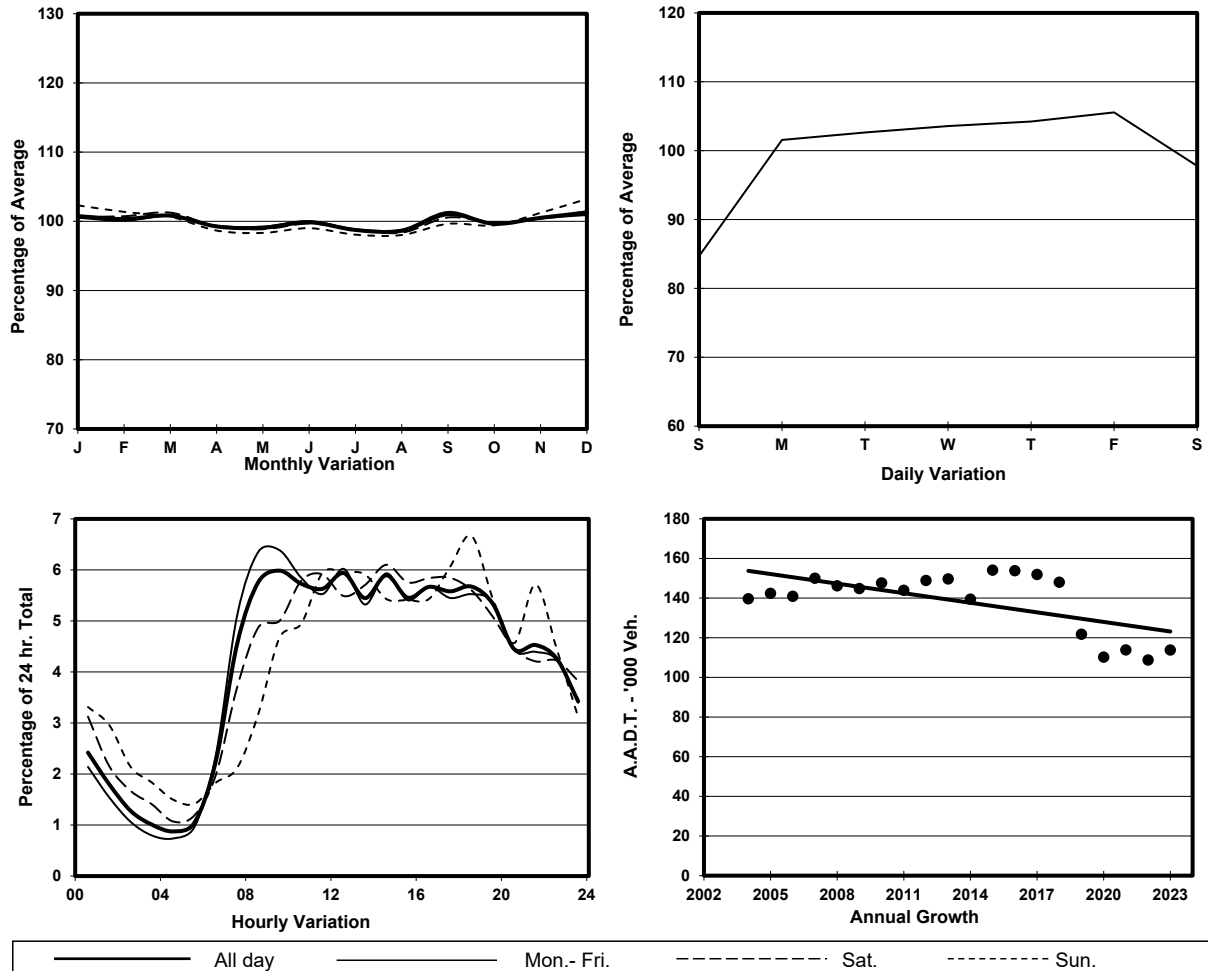
ROAD NETWORK MAJOR

ROAD TYPE URBAN TRUNK ROAD

LINK VICTORIA PARK RD (from GLOUCESTER RD to ISLAND EASTERN CORRIDOR)



1. TRAFFIC FLOW VARIATION AND GROWTH



2. TRAFFIC CHARACTERISTICS (BY DIRECTION)

Parameter	All - Day	Mon. - Fri.	Sat.	Sun.
EAST BOUND				
A.A.D.T.	52590	54660	52300	45780
R 12 / 24 - %	66.2	67.7	63.3	60.9
R 16 / 24 - %	85.7	87.2	82.4	80.9
AM Peak Hour	0900-1000	0800-0900	0900-1000	0900-1000
One-way flow at AM peak hour	2960	3340	2510	1990
T - % (AM)	-	9.9	-	-
PM Peak Hour	1600-1700	1600-1700	1600-1700	1600-1700
One-way flow at PM peak hour	3050	3160	3090	2690
T - % (PM)	-	7.4	-	-
Prop.of commercial vehicles - 16 hr.	-	6.2	-	-
WEST BOUND				
A.A.D.T.	61190	64140	59920	51440
R 12 / 24 - %	68.3	69.3	67.6	62.5
R 16 / 24 - %	86.1	86.8	84.6	82.8
AM Peak Hour	0900-1000	0900-1000	0800-0900	0900-1000
One-way flow at AM peak hour	3850	4300	3390	2560
T - % (AM)	-	10.8	-	-
PM Peak Hour	1800-1900	1600-1700	1700-1800	1800-1900
One-way flow at PM peak hour	3560	3590	3600	3860
T - % (PM)	-	7.9	-	-
Prop.of commercial vehicles - 16 hr.	-	8.2	-	-

3. OTHER INFORMATION AND COMMENT

4. Vehicle classification and occupancy - Monday to Friday

Time		Class of vehicle									
		Motor Cycle	Private Car	Taxi	Private LB	PLB	Goods veh.		Non Fr. Bus	Fr. Bus	
							Light	M & H		SD	DD
0700-0800	Pro	4.4	43.0	24.8	3.9	0.2	11.3	3.0	5.0	0.0	4.4
	Ocp	1.1	1.3	2.0	9.3	12.7	1.3	1.5	15.4	0.0	52.8
0800-0900	Pro	4.7	49.6	22.2	1.0	0.1	11.6	2.4	3.4	0.0	5.1
	Ocp	1.1	1.3	2.0	3.5	20.0	1.4	1.4	8.4	0.0	61.0
0900-1000 Peak hour	Pro	2.1	47.9	23.9	0.6	0.1	17.2	3.8	0.8	0.0	3.6
	Ocp	1.1	1.4	1.9	2.8	16.0	1.4	1.3	14.4	0.0	39.0
1000-1100	Pro	1.6	40.7	27.2	0.9	0.3	21.8	3.9	1.2	0.0	2.4
	Ocp	1.1	1.3	1.9	3.3	3.4	1.5	1.3	4.1	0.0	38.6
1100-1200	Pro	2.9	41.2	27.6	1.2	0.3	18.9	4.5	1.1	0.0	2.2
	Ocp	1.1	1.4	1.9	1.5	7.5	1.5	1.5	3.4	0.0	34.2
1200-1300	Pro	2.1	45.8	23.8	1.1	0.2	20.1	3.6	1.3	0.0	1.9
	Ocp	1.0	1.4	2.0	4.9	5.7	1.4	1.2	9.2	0.0	35.7
1300-1400	Pro	2.6	39.1	27.5	1.3	0.1	20.2	5.5	1.6	0.0	2.0
	Ocp	1.0	1.4	2.0	6.1	2.0	1.4	1.3	3.8	0.0	40.9
1400-1500	Pro	1.8	50.3	22.1	0.7	0.1	19.7	2.2	1.4	0.0	1.8
	Ocp	1.0	1.5	2.1	2.7	4.0	1.4	1.2	3.5	0.0	37.4
1500-1600	Pro	1.9	46.2	23.5	1.7	0.0	20.3	2.4	1.7	0.0	2.1
	Ocp	1.0	1.4	2.1	3.9	0.0	1.4	1.4	22.3	0.0	37.8
1600-1700	Pro	2.3	51.5	21.8	1.8	0.1	14.8	2.2	2.8	0.0	2.7
	Ocp	1.0	1.4	1.9	6.4	13.0	1.4	1.2	17.5	0.0	38.6
1700-1800	Pro	4.4	54.2	19.7	0.9	0.2	13.9	1.4	2.0	0.0	3.3
	Ocp	1.1	1.5	2.0	1.4	7.0	1.4	1.2	8.9	0.0	46.4
1800-1900	Pro	4.4	59.1	22.2	0.3	0.1	8.1	0.4	1.9	0.0	3.5
	Ocp	1.1	1.5	2.2	3.8	17.0	1.2	1.7	12.1	0.0	56.5
1900-2000	Pro	2.9	53.4	30.9	0.1	0.1	7.7	1.2	1.1	0.0	2.7
	Ocp	1.1	1.4	2.0	1.0	20.0	1.5	1.4	16.3	0.0	43.4
2000-2100	Pro	2.1	51.3	34.5	0.2	0.2	5.8	1.1	1.8	0.0	3.1
	Ocp	1.1	1.3	1.8	2.5	9.0	1.3	1.3	17.2	0.0	27.1
2100-2200	Pro	4.5	47.4	36.3	0.2	0.2	6.6	1.0	0.9	0.0	2.9
	Ocp	1.1	1.4	1.8	1.5	15.5	1.4	1.6	3.4	0.0	24.0
2200-2300	Pro	4.3	47.9	38.9	0.0	0.2	4.7	0.4	0.8	0.0	2.8
	Ocp	1.2	1.4	1.8	0.0	17.0	1.4	1.4	22.4	0.0	20.8
16 hours	Pro	3.0	48.1	26.3	1.0	0.1	14.2	2.5	1.8	0.0	2.9
	Ocp	1.1	1.4	2.0	5.1	9.8	1.4	1.3	11.9	0.0	42.3

Legend: Pro. Proportion of vehicles in % (Sum may not add up to 100% due to figure rounding)*

Ocp. Average occupancy of vehicles including both driver and passengers*

M&H Medium and Heavy

* All traffic data are collected from combined bounds